



KIMBERLEY HOMES IN THE OKANAGAN

PROVIDING HOMEBUILDING EXPERIENCES
THAT ARE SECOND-TO-NONE

COMMUNITIES

Kelowna B.C

- Lone Pine Estates (Black Mountain)
- Trailhead at the Ponds (Upper Mission)
- The Orchard (Lower Mission)

Coldstream B.C

- Morningview on Middleton
(Middleton Mountain)



Morningview is a new hillside community located on the east flank of Middleton Mountain. The beautiful vistas over the Coldstream Valley will draw you in, while a brand new house and sense of community will make you feel right at home.

Nearby Amenities:

- Save-on Foods: 5 minute drive
- Vernon Jubilee Hospital: 5 minute drive
- Vernon Golf & Country Club: 5 minute drive
- Coldstream Elementary School: 6 minute drive
- Creekside Off-Leash Dog Park: 7 minute drive
- Kalamalka Lake and Kal Beach: 7 minute drive
- Okanagan Lake and Beach access: 13 minute drive
- Gray Monk Estate Winery: 30 minute drive
- Silverstar Mountain Resort: 30 minute drive
- YLW International Airport: 30 minute drive
- Downtown Kelowna: 50 minute drive



- Kimberley Homes Available Lots
- Kimberley Homes Designer Homes
- Kimberley Homes Showhome



Build Your Custom Kimberley Homes on Lots : 5,9 or 14

Move in sooner with a Kimberley Homes Designer Home on Lots: 45 and 46

Visit our Showhome Opening Winter 2023 on Lot: 38

LOT 38

401 MORNINGVIEW DRIVE

Showhome – Opening Winter 2023



MAIN FLOOR
1534 sqft

UPPER FLOOR
1512 sqft

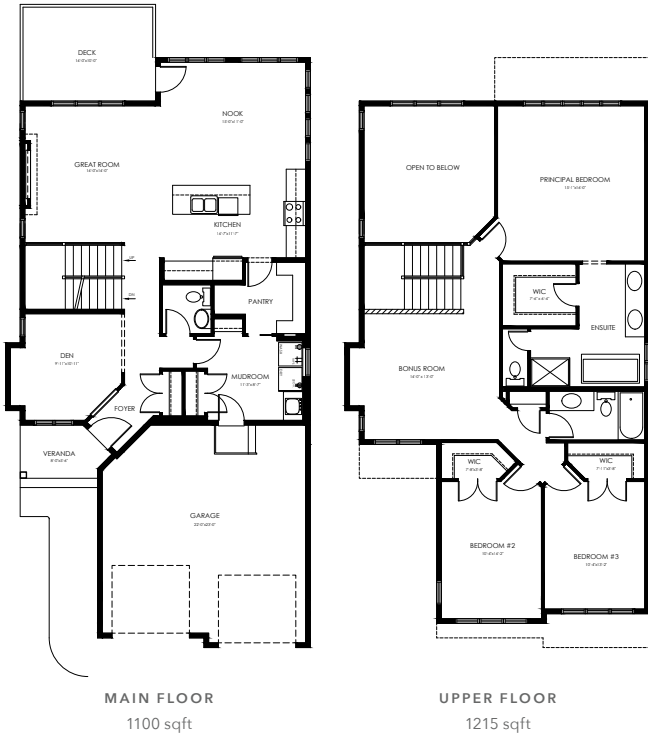
Photos and renders shown are of previously built models. Actual colours/finishes may vary.



LOT 45

429 MORNINGVIEW DRIVE

Designer Home - Emerald Floorplan



Photos and renders shown are of previously built models. Actual colours/finishes may vary.



LOT 46

433 MORNINGVIEW DRIVE

Designer Home - New Hampshire Floorplan



MAIN FLOOR
1329 sqft

UPPER FLOOR
1378 sqft

Photos and renders shown are of previously built models.
Actual colours/finishes may vary.





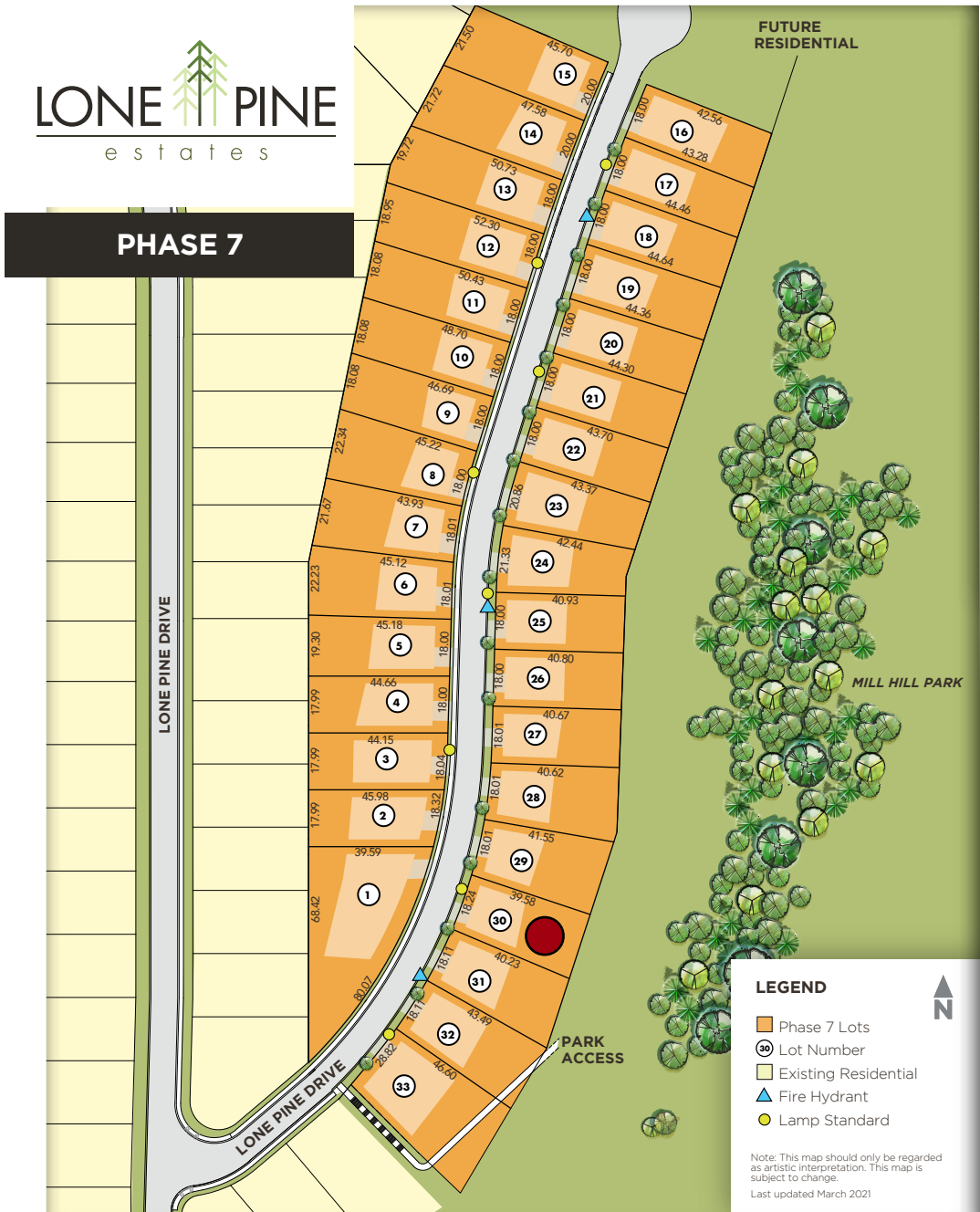
Lone Pine Estates provides amenities throughout the four-seasons in the Okanagan Valley. This community gives you that quiet feeling of suburbia while the amenities nearby feel like a permanent playground right in your own backyard.

Nearby Amenities:

- Tower Ranch Golf Course: 11 minute drive
- Ancient Hill Winery: 15 minute drive
- UBCO: 12 minute drive
- YLW Airport: 14 minute drive
- Big White Ski Resort: 46 minute drive



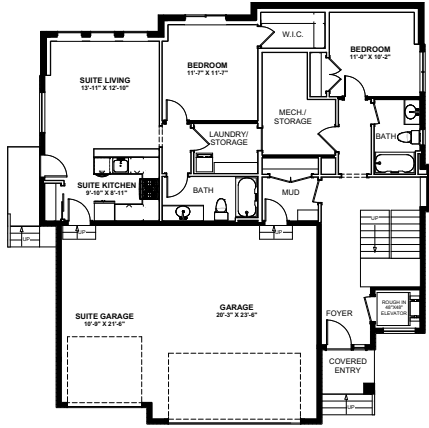
PHASE 7



Lot 30 – 1141 Lone Pine Drive Designer Home

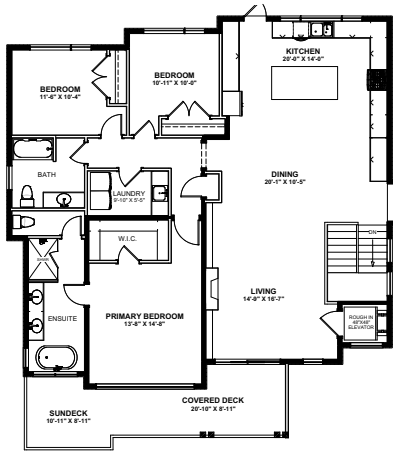
1141 LONE PINE DRIVE

\$1,579,000



LOWER FLOOR

1284 sqft
Suite: 691 sqft



MAIN FLOOR

1831 sqft





trailhead

AT THE PONDS

The community of Trailhead at the Ponds is located in the highly desirable area of Upper Mission in Kelowna that offers sweeping views of Lake Okanagan.

Nearby Amenities:

- Sarsons Beach: 10 minute drive
- Bertram Creek Park: 13 minute drive
- Capital News Center: 10 minute drive
- H2O Rec Centre: 10 minute drive
- Downtown Kelowna: 20 minute drive

- Kimberley Homes Showhome
- Kimberley Homes Designer Homes

trailhead
AT THE PONDS

t phase 1



CARRINGTON LAND

TrailheadAtThePonds.ca

- 🔑 INCOME SUITE ALLOWED
- LAMP STANDARD
- ⚡ FIRE HYDRANT
- ★ SHOWHOMES

- 3 LOT NUMBER
- ★ EXISTING RESIDENTIAL
- ◇ FUTURE RESIDENTIAL

NOTE: This map should only be as artistic interpretation. This map is subject to change.

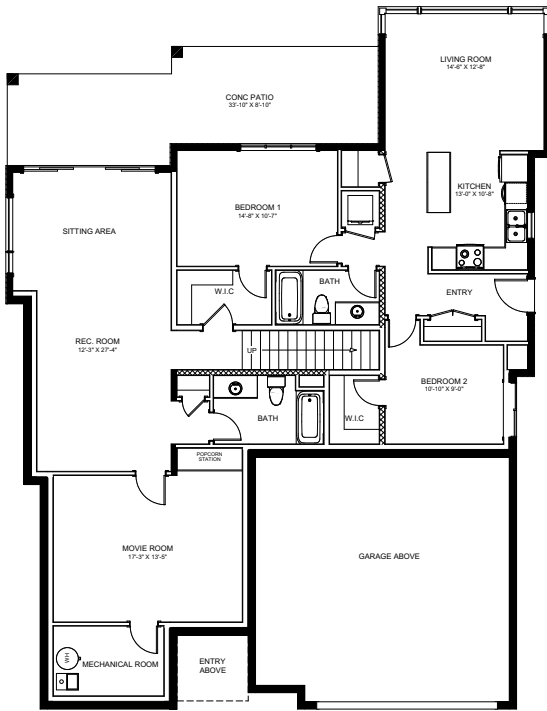
Visit our Showhome - Lot 13
Move into our Designer Home - Lot 11

1050 EMSLIE ST - SHOWHOME

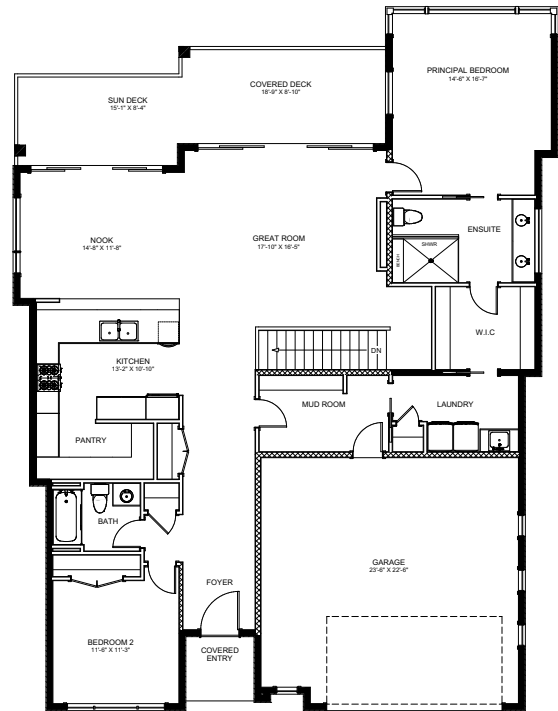
Contact our New Home Concierge for open hours
or to schedule a VIP appointment: 778-401-7376



1042 EMSLIE ST - DESIGNER HOME



GROUND FLOOR
1522 sqft



MAIN FLOOR
1861 sqft



● Kimberley Homes Available Lots

trailhead
AT THE PONDS

t overall



TrailheadAtThePonds.ca

- PHASE 1 - NOW SELLING
- PHASE 2 - COMING SOON
- PHASE 3 - COMING SOON
- 3 LOT NUMBER
- ★ SHOWHOMES

NOTE: This map should only be as artistic interpretation. This map is subject to change.

Build with Kimberley Homes on Lot 52,

or contact our New Home Concierge for up-to-date lot availability and options in Phase 2.



The Orchard

IN THE MISSION

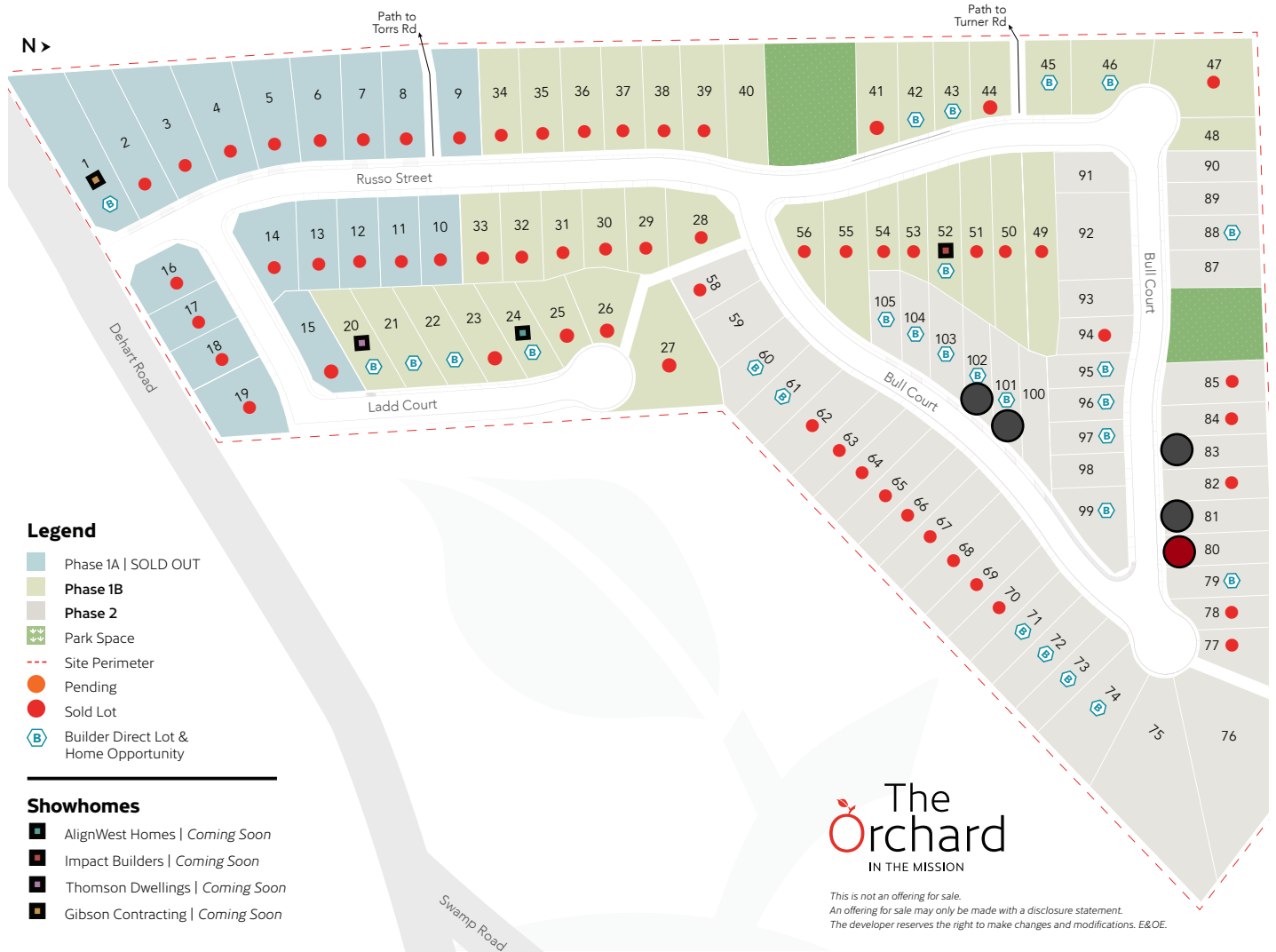
Taste the good life

Live in one of the most sought-after neighbourhoods of the Okanagan. Close to everything you want and need but far enough away from it all. The Orchard is minutes from the best schools, parks, and facilities in the area.

Nearby Amenities:

- CedarCreek Estate Winery: 9 minute drive
- YLW Airport: 22 minute drive
- Downtown Kelowna: 15 minute drive
- Waterfront Park: 15 minute drive
- Michaelbrook Golf: 5 minute drive

- Kimberley Homes Available Lots
- Kimberley Homes Designer Homes



**Build Your Custom Kimberley Homes on Lots Available -
Lots 81, 83, 101 and 102**

Kimberly Homes Designer Home - Lot 80

LOT 80

948 BULL CRES - DESIGNER HOME



MAIN FLOOR
1329 sqft

UPPER FLOOR
1378 sqft



*Photos and renders shown are of previously built models.
Actual colours/finishes may vary.*

ABOUT

Kimberley Homes started in Edmonton AB in 1989, but we have always had roots in B.C. Named after Kimberley B.C, our founding family found inspiration for their future company's name when traveling to BC for the summer. From the early days operating out of a home office to growing into a company that services clients in 2 provinces, Kimberley Homes remains a family-owned, small business with a commitment to exceptional client experience.

Seven Time Builder of the Year

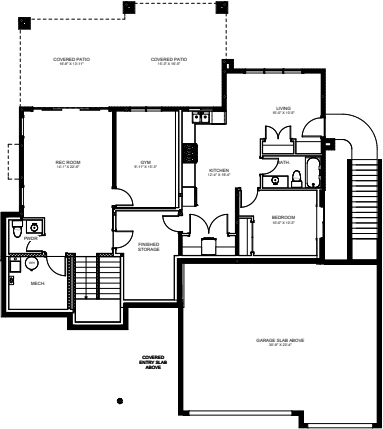


Brittney Struck
New Home Expert

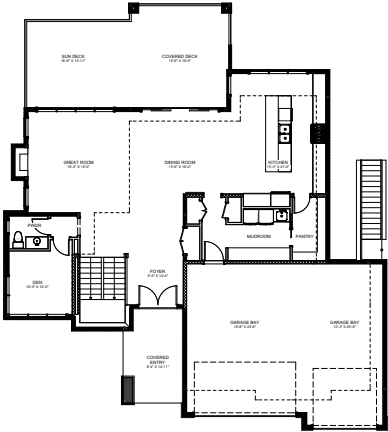
Amanda Aranas
New Home Expert

GET INSPIRED

2 STOREY 60'



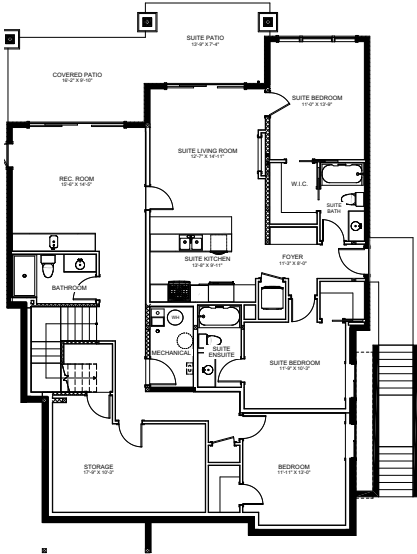
GROUND FLOOR
1344 sqft



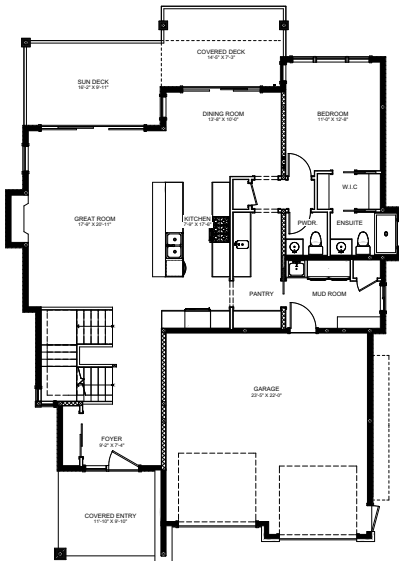
MAIN FLOOR
1541 sqft



2 STOREY 42'



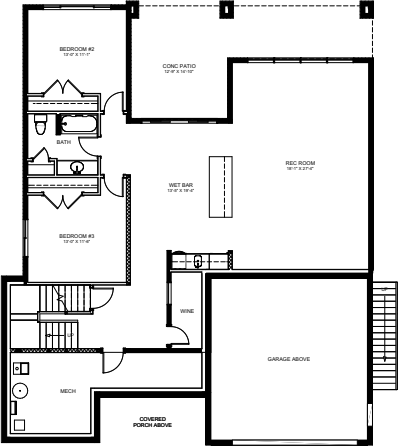
GROUND FLOOR
1899 sqft



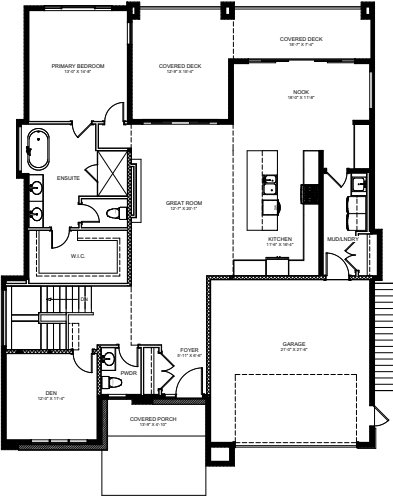
MAIN FLOOR
1410 sqft



RANCHER 49'



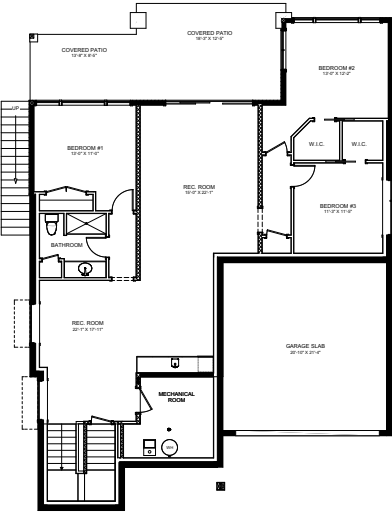
GROUND FLOOR
1507 sqft



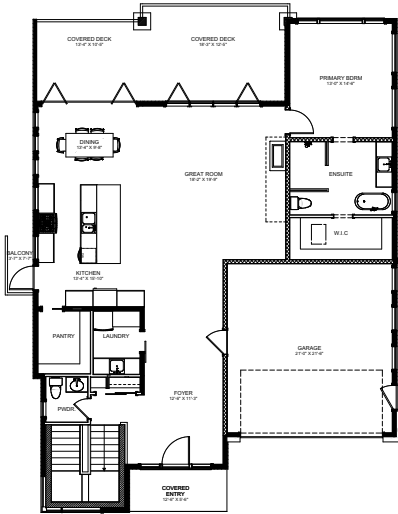
MAIN FLOOR
1851 sqft



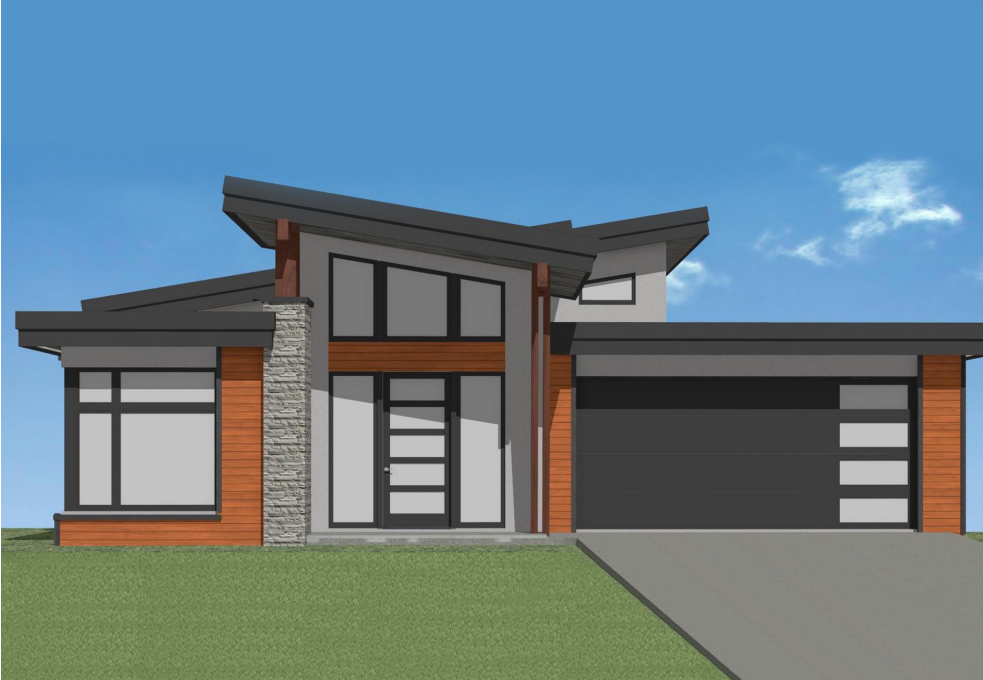
RANCHER 46'



GROUND FLOOR
1523 sqft



MAIN FLOOR
1776 sqft



REASONS TO BUILD WITH KIMBERLEY IN THE OKGN

- Living, breathing, award-winning excellence since 1989.
- Family business means family values.
- One of a kind personalized home building experiences for any size & any price
- A team of experts makes your home exceptional.





BUILD ON YOUR LOT

Already have a lot that you would like to build your home on?

If we can get our team out there to properly supervise the construction of your new home, we will build there. We're here to give you the flexibility and expanded options that you are looking for to build your dream home.





TAKE THE FIRST STEP TO BUILDING YOUR DREAM HOME IN THE OKANAGAN

Whether you have questions about purchasing a new home, the build process, or questions after possession, our team is dedicated to providing the best experience for all of our customers. We look forward to hearing from you.

Call Kimberley Homes: 778.401.7376
KIMBERLEYOKGN.COM