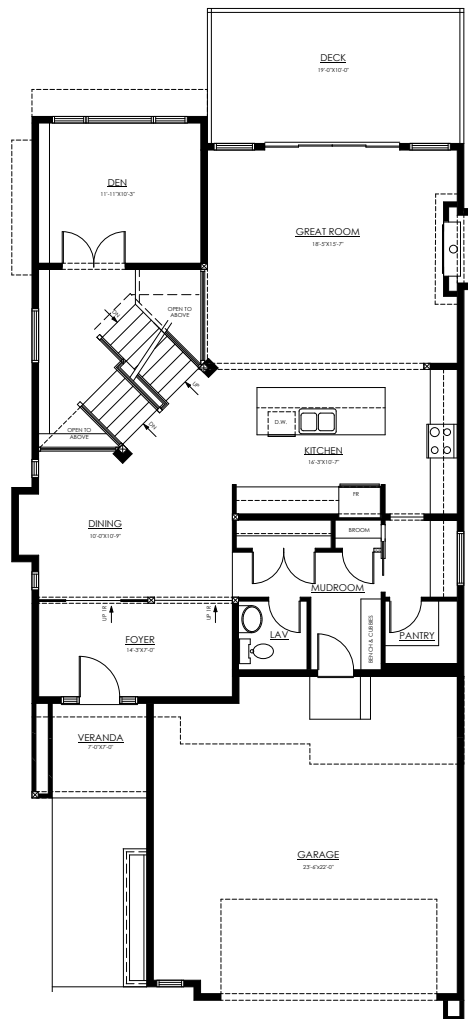


# 433 MORNINGVIEW DRIVE

2707 SQFT – 3 BEDROOMS

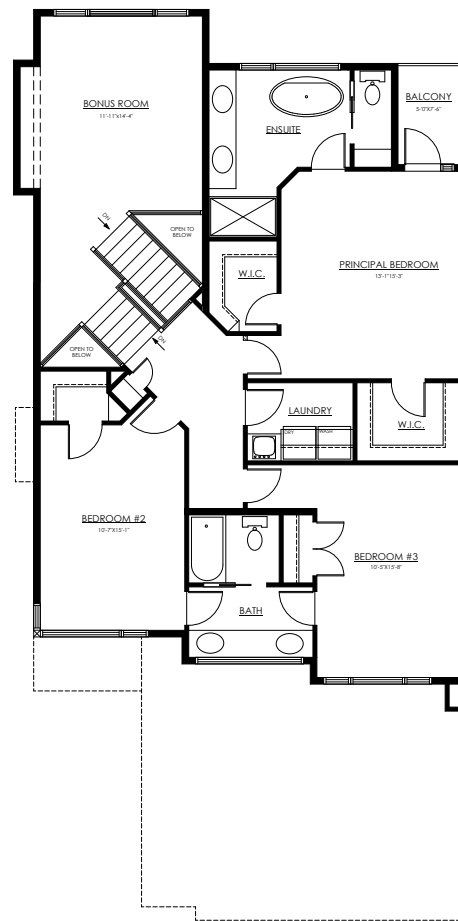
## NEW HAMPSHIRE

The New Hampshire floorplan is anchored by its signature, open-rise, scissor staircase. A dropped Den and raised Bonus Room with 10' ceilings are a modern take on the traditional split level.



MAIN FLOOR

1329 sqft



UPPER FLOOR

1378 sqft



30 YEARS OF EXCELLENCE

WWW.BUILDWITHKIMBERLEY.CA

Questions? Call or text us!  
780.809.5025