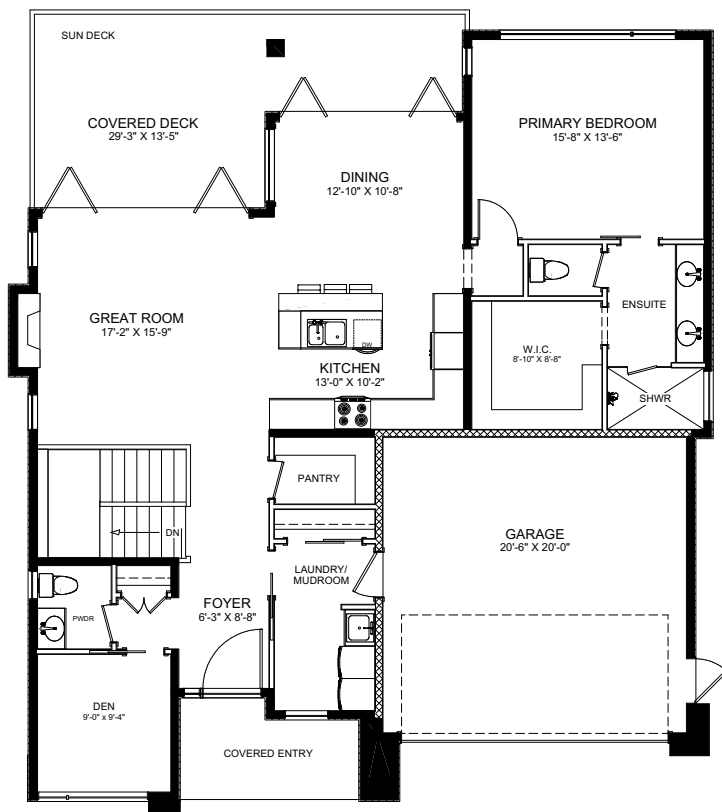


# 1050 EMSLIE ST.

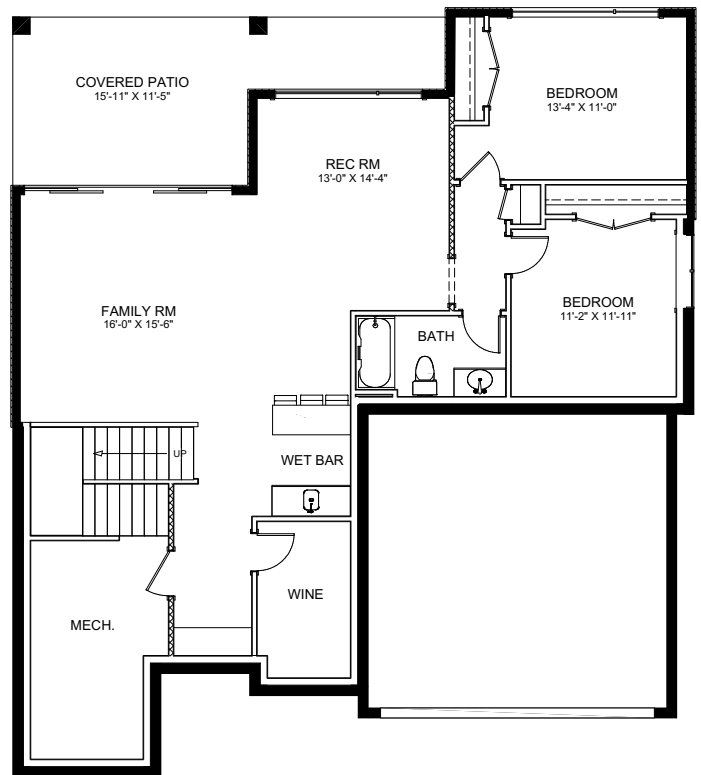
2743 SQFT – 3 BEDROOMS

## TRAILHEAD AT THE PONDS – SHOWHOME

This walkout rancher with a finished basement showcases mountain and lake views, framed perfectly by the barrel vault ceilings on the main floor.



MAIN LEVEL  
1497 sqft



LOWER LEVEL  
1246 sqft



30 YEARS OF EXCELLENCE

KIMBERLEYOKGN.COM

Questions? Call or text us!  
778.401.7376