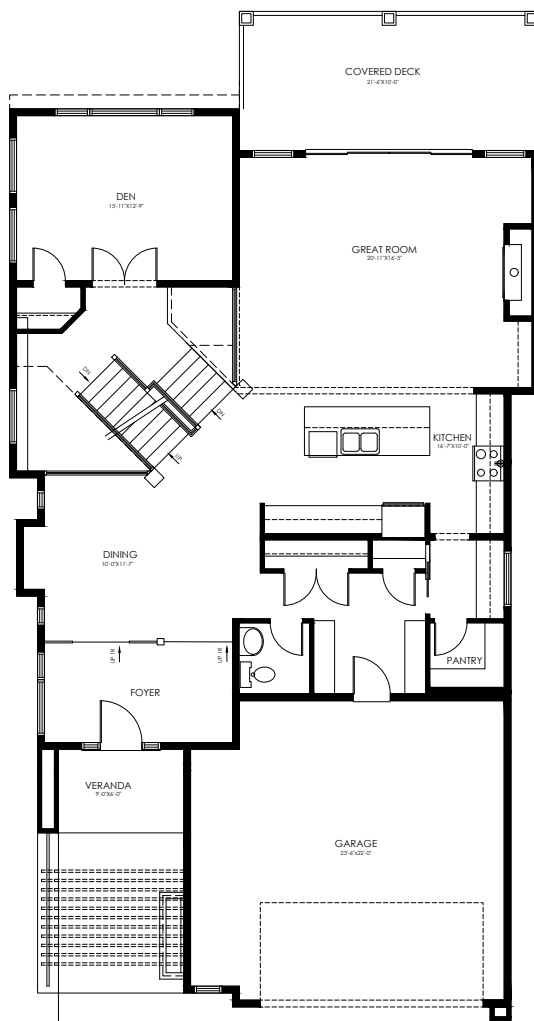


NEW HAMPSHIRE

3046 SQFT – 3 BEDROOMS

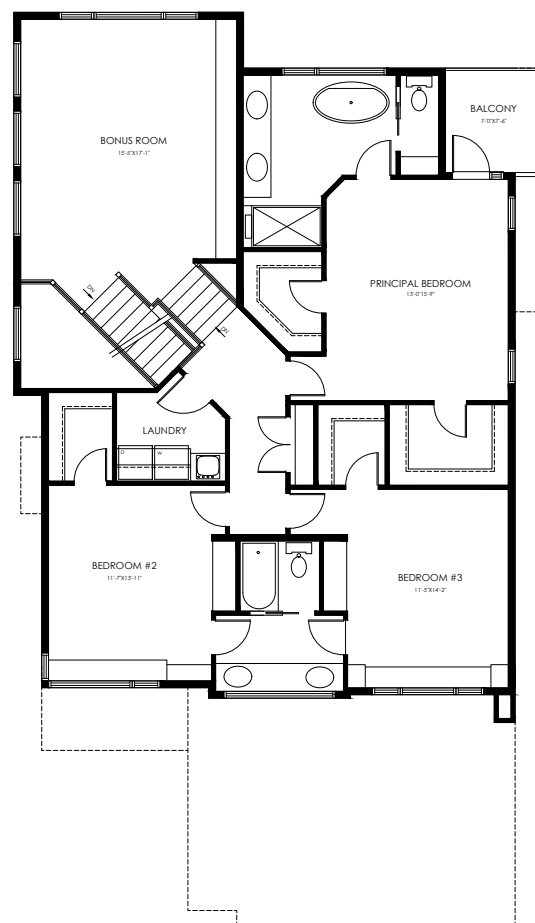
MORNINGVIEW ON MIDDLETON SHOWHOME

The New Hampshire floorplan is anchored by its signature, open-rise, scissor staircase. A dropped Den and raised Bonus Room with 10' ceilings are a modern take on the traditional split level.



MAIN FLOOR

1534 sqft



UPPER FLOOR

1512 sqft