

KIMBERLEY

DESIGNER HOME

MORNINGVIEW ON MIDDLETON

429 MORNINGVIEW DRIVE

3 Bedrooms | 2.5 Bathrooms

MODERN FAMILY LIVING IN MORNINGVIEW ON MIDDLETON

Experience the opulence of our exquisite Designer Home in Morningview on Middleton. Our meticulously crafted Emerald floor plan offers a functional, yet elegant design for all to enjoy.

Prepare to be captivated by the breathtaking two-story ceilings that grace the great room and magnificent windows that exude elegance and incredible Okanagan views. The thoughtful floor plan design caters to every aspect of modern family living, seamlessly blending functionality with refined sophistication.

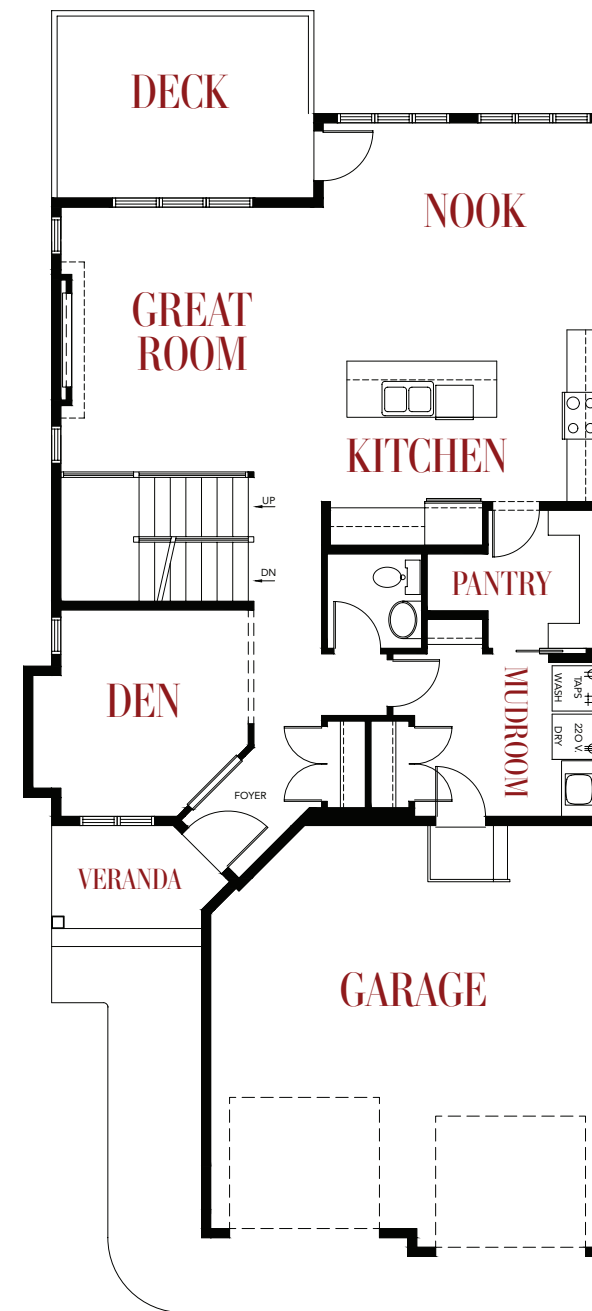
Discover culinary luxury in the astounding chef's kitchen, meticulously crafted to meet the highest standards. A sprawling central island commands

attention, and is perfect to unleash your culinary creativity. The walk-through pantry offers a seamless blend of practicality and convenience, with direct access to the mudroom and garage, ensuring a smooth transition when unloading groceries and household essentials. Marvel at the ample space it provides, with features such as a stand-up deep freeze and custom shelving ensuring that your culinary endeavors remain unhindered.

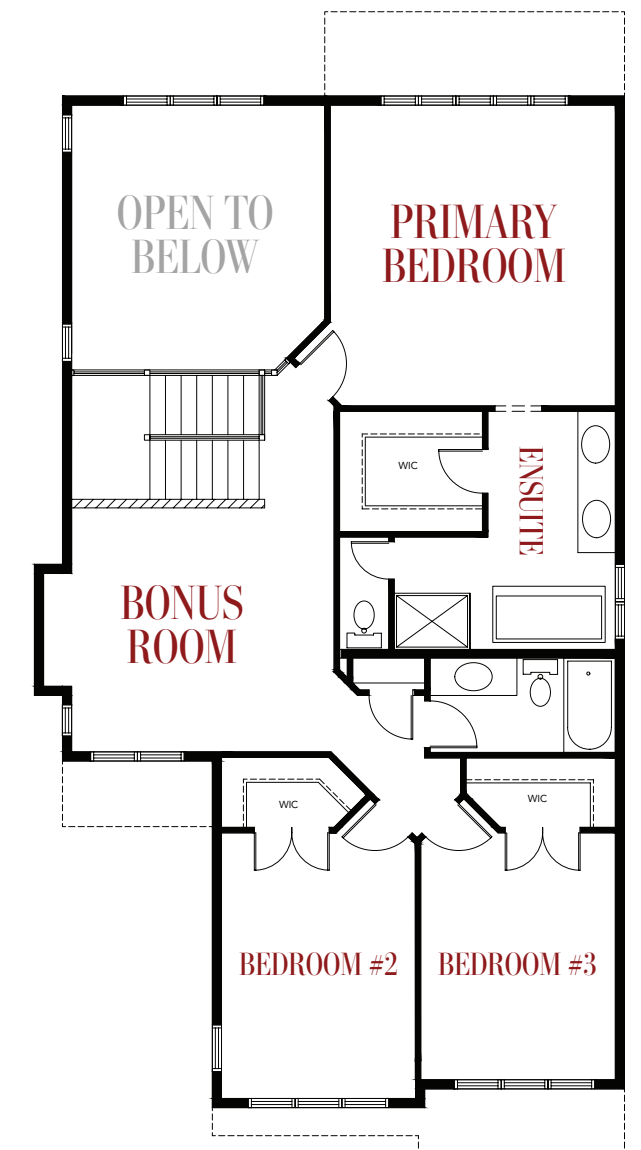
Prepare to be enveloped in an ambiance of refinement as you immerse yourself in the true luxury of this Kimberley home, where every detail has been meticulously curated and designed to surpass your greatest expectations.

FLOORPLAN EMERALD 30

3 Bedrooms | 2.5 Bathrooms | 2,315 Sq. Ft.



MAIN FLOOR
1,100 Sq. Ft.



UPPER FLOOR
1,215 Sq. Ft.



EXQUISITE EMERALD

THE LIVING SPACE

Find yourself immersed in a realm of refined comfort and sophistication. The grandeur of the soaring two-story ceilings in the great room instantly commands attention, while the abundant windows invite the warmth of natural light to cascade throughout the room, creating an ambiance of sheer serenity. This harmonious blend of openness and natural beauty sets the stage for moments of relaxation and social gatherings.

DESIGNER HOME FEATURES

- Chef's kitchen includes quartz counters, custom cabinetry with soft close doors & drawers, under cabinet LED lighting, and the central island has a flush ledge for even more prep space, storage, and casual seating
- The attached walk-through pantry has 5 rows of built-in shelves, and space for a stand-up freezer or additional fridge
- Spacious nook connects to the rear deck with glass & aluminum railing, overlooking the pond and green space
- Generous primary bedroom includes a walk-in closet with custom organizer
- 5-piece spa ensuite includes freestanding tub, large tiled shower with 10mm glass door, two undermount sinks set in quartz counters, built-in MDF shelving, and a private water closet
- Soaring two-storey ceilings in the great room with expansive windows on both storeys
- Main-floor den/flex room adjacent to the foyer is open to the main hallway, and is perfect for a den or study space, or even a playroom
- Family-sized main floor mud room & laundry room includes a built-in bench and cubbies to help organize all that 'stuff' that comes in to a busy family home, as well as a laundry sink, quartz counter, and custom cabinets
- Second-floor bonus room is centrally located at the top of the stairs
- The kids' bedrooms are spacious with large windows and both have walk-in closets with custom organizers
- Walkout basement with 9' ceilings



DINING DESIGN

Prepare to embark on a culinary journey like no other as you step into the heart of this home – the exquisite chef's kitchen. This culinary haven is a testament to the harmonious fusion of functionality and elegance. The sprawling central island stands as a testament to the craftsmanship and attention to detail, beckoning both seasoned chefs and aspiring cooks alike to unleash their culinary creativity.



THE ENSUITE

From the sleek, gleaming countertops to the meticulously selected fixtures, each element of the ensuite exudes a sense of refined sophistication. The ensuite offers a haven of rejuvenation, where you can escape the stresses of the day and immerse yourself in pure bliss. Pamper yourself with the indulgent features that adorn the room. With a luxurious bathtub and spacious shower equipped with state-of-the-art fittings, this space will transform your daily routine into a revitalizing experience.

COLDSTREAM'S HILLSIDE HAVEN

Discover the epitome of refined living at Morningview on Middleton, an exclusive hillside community nestled on the prestigious east flank of Middleton Mountain in Coldstream, British Columbia. Prepare to be mesmerized by the awe-inspiring vistas that stretch over the picturesque Coldstream Valley, creating a captivating backdrop that seamlessly blends with the surrounding natural beauty.

The sense of community at Morningview will enchant you, fostering a warm and welcoming atmosphere that immediately makes you feel at home. Embrace a life of unparalleled grandeur, where every detail has been thoughtfully curated to offer a lifestyle of indulgence and sophistication.





KIMBERLEYOKGN.COM
(778) 401-7376

